

# CLYDESDALE TRIBUNE

March 2010 Newsletter of the  
Clydesdale Horse Society of New Zealand Incorporated



## *IN THIS ISSUE:*

*AGM & Field Day  
Nelson 2009*

*Royal NZ Show  
Christchurch*

*New season foals*

*Registration update*

*Horse of the Year 2009*

## EDITORIAL

Welcome to another edition of *The Clydesdale Tribune*. It has been a busy and testing year for most of us with the recession, droughts and a changing political landscape. I hope you enjoy this edition and take the opportunity to encourage you to use our society website [www.clydesdale.org.nz](http://www.clydesdale.org.nz) as it is an excellent and complimentary medium to this printed magazine. You will find that this edition covers our three biggest shows but has left all the other show results up and down the country to the website. Otherwise we would have a magazine that is almost exclusively show results. For those of you who do not have access to the internet and wish to see the results of all NZ shows I suggest you have a friend print out the results for you (from our website) or contact me for other options.

Last year I had the opportunity of attending the Royal Show in Christchurch and once again I was impressed with the standard, judging and number of horses on display. During the show I was asked to ride one of Colin Drummond's horses in the riding class but suggested instead that he give the ride to my 9 year old daughter. He did agree but with a certain amount (I guessed) of trepidation - it was therefore arranged that Emily ride Erewhon Bert. The way everyone rallied around to loan Emily the necessary gear was outstanding - shirts, ties, saddle, hat etc. Emily went out on Bert who is appr. 18hh and rode him better I'm sure than her Dad would have. She placed 3rd and may have done even better if she knew what the command for "back" was. The crowd thought it was great and gave M a big round of applause. Afterwards the Clydesdale fraternity had a whip around and bought the saddle for Emily to take home. It really was a trip of a lifetime for M as it was also the 1st time she had ever been in a plane. But the story doesn't finish there.....

I had been working on breaking my young stallion into harness and really thought it would be a good idea to have a "steady" influence around him. After a lot of persuasion I convinced Colin and Chrissie to sell me Bert. He arrived after a 3 day journey just before Christmas but I kept it a surprise from M - when he turned up I tied him to a tree on our drive and told M there was something I had left on the drive and could she get it for me - well it took a while for the reality to sink in as she asked with a bewildered smile - "Dad I think this is Bert". I answered with "Merry Christmas". It took me a while to peel her off Bert but since then I have managed to use him myself and he has been the perfect role model for my young stallion who is now fully broken in to single and pair work in the chains. Details of the forthcoming 2010 AGM are published in this edition and I encourage you to all attend if you can. Look forward to catching up then.

Paul Stroobant

Front Cover: Wagon view approaching Ben Avon Station.

Inside Cover: Emily Stroobant reunited with Bert

## CLYDESDALE HORSE SOCIETY OF NEW ZEALAND (INCORPORATED)

### PRESIDENT

**W L AFFLECK**

Tapanui/Waikoikoi Road  
RD 5, Gore  
03 204 8243

### SECRETARY/EDITOR

**P T Stroobant**

173 Inland Road  
RD 2, Helensville 0875  
09 420 4919  
[kkstudio@xtra.co.nz](mailto:kkstudio@xtra.co.nz)

# Annual General Meeting 2009

The annual general meeting of the Clydesdale Horse Society of New Zealand (Inc) was held at Nelson on Friday May 29 2009. Forty four members attended. Listed below are some of the details.

## *Condolences*

Gilbert Cooper - a minutes silence was observed

## *Council*

The council remains the same with the exception of Mr Kevin Gillman standing down as president (remains a council member) with Mr Bill Affleck taking on the position (unopposed). Mrs Susan Butterick-Kent was nominated for council but after scrutineers counted the votes this nomination was unsuccessful.

## *Publicity Officers*

Steve Muggeridge remains the North Island Publicity Officer but we now have a new South Island representative - Mr Phil Amberger.

## *Charities Commission*

P.Stroobant advised our application was unsuccessful but we did have the option to appeal. It was decided not to persue with an appeal.

## *Subscription*

The annual subscription was confirmed at \$50 and life membership at \$500.

## *History Book*

After extensive discussion a sub committee was formed - S.Butterick-Kent, P.Stroobant, W.Affleck, J.Morris, T.Chisholm, J.Cook & J.Hawkins

## *Rugby World Cup 2011*

J.Morris advised he had made contact with the NZ Rugby Union re wagons appearing at some games and or parades. New president and secretary to per-sue further.

## *Centenary*

W.Affleck advised he is in the process of organis-ing the event and there will be more to report at the next AGM. It was decided that overseas Clydesdale representatives and societies should be invited.

## *Presentation of Trophies*

Silver Medal - Canterbury Royal Show, J.Booth & G.Day - Dayboo Anja

Silver Medal - Morrinsville A&P, B&C Signal  
Sugar Creek Nell

Murrayfield Trophy - The winners since 2001 had been engraved upon the plinth.

2008 winner - C. Drummond with Erewhon Maggie



*Our new president - Mr Bill Affleck*



*Bruce Signal with Sugar Creek Nell*



*Gaye Day with Dayboo Anja*



# FIELD DAY 2009

Although not quite as famous as Sir Patrick Hogan of Cambridge Stud (first destination of 2008 Field Day) none the less - Mr Fergus O'Connor is about as "famous" as any other Clydesdale personality in the country and it was his Donnybrook Stud that commenced our Field Day.



Fergus started by exhibiting his breeding mares and a selection of young stock followed by the resident stallion - Narioka Vagabond. Junior judges and interested parties were invited to assess the young stock under the watchful eye of Fergus and other senior judges present.

A wagon ride followed taking most of us to the barn stacked with wagons and all kinds of heavy horse equipment.

Lunch was had at the local Appelby pub which incidentally featured many pictures of Fergus and his horses.

Next stop was Lester Roundtree's farm in Motueka - which was a real eye opener in so many ways. The sheer volume of wagons, tools, machinery, ploughs, implements and collectables was astonishing.



There was also a four horse team hitched to a stage coach to greet us.

Our final stop was at a local hotel for some quiet refreshments before making our way back to the Trailways Hotel in Nelson.



## AGM 2010

Friday 4 June 2010

Counties Inn

17 Paerata Road, Pukekohe

Phone 09 238 9319 Fax 09 238 3076

Web site:- [www.countiesinn.co.nz](http://www.countiesinn.co.nz)

Please book your own accommodation and if you require anything extra, state this at time of confirmation. Please note that all meals, beverages, accommodation and miscellaneous costs are at your own expense. Conference weekend rate of \$115.00 incl gst per room per night.

For late bookings - If all the rooms are booked please contact the society secretary for motel details situated very close by.

Council meeting starts at 9.30am

Annual General Meeting starts at 1.30pm  
Items for the agendas are open now and will close on May 1 2010. Nominations for the office bearers are now open and will close on April 28 2010. Councillors retiring by rotation are automatically eligible for re-election unless they choose to resign from the position. Retiring 2010 are  
RJ Hawkins, J Morris, FJ O'Connor,  
AKJ Stevens, A Vliet Vlieland

# Stallion Returns for the 2008 Breeding Season

Alpine View Thomas	2
Armageddon's Lord Samson*	5
Ashstencroft Tyler	1
Ashstencroft Tyrone	1
Beereega Lord Carrick*	3
Box Valley Scania*	9
Coldstream McRae	1
Dajata Blue Moon	1
Donnybrook Seamus	2
Kintyre Lodge Robbie	2
Mossdale Royal	3
Mossdale Statesman	5
Murroka Douglas*	8
Narioka Vagabond*	15
Rockwood Chieftain	4
Rockwood Gallant Lad	1
Rockwood Superb	2
Tanglewood Little John	2
Waihapa Captains Fleetwood	3
Woodbury Footprint	4
Waihapa Highlanders Victory	1
<b>TOTAL MARES SERVED</b>	<b>75</b>

\* Imported from overseas

## HOW TO REGISTER YOUR CLYDESDALE

At the last council meeting it was passed that ALL Clydesdale registrations will require accompanying photos of the animal clearly showing the horse, its brands and distinguishing markings. These photos must be sent to the secretary along with the current filled out registration form (available from our website or from the secretary) when registering your next Clydesdale. We hope this innovation will ensure that all horses are registered correctly and that tracing horses of unknown origin will become a thing of the past. Your participation in this development is now mandatory and is greatly appreciated.

### OTHER USEFUL BRANDING INFORMATION

- The method to be used is either freeze or fire branding on one or both shoulders using the stud brand (these must be applied for) as registered with the secretary and a sequential number in order of each season's foaling over the last digit of the year of the decade. Please note that if your foal is born on or after January 1 the season year should be used eg if your foal was born January 2nd 2009 the numeral 8 (2008 being the season year)) should be used.
- We suggest branding to be carried out soon after weaning.
- Entry Eligibility - Any stallion, colt, mare or filly in New Zealand may be registered for entry in the Stud Book if got by an entered (numbered) sire from an entered (numbered) dam, provided the entries of both the sire and dam are made with The Clydesdale Horse Society of New Zealand Incorporated.
- Prefixes, suffixes and names - on application having been made, and a fee of \$20 paid by a member, the Council may grant registration of a prefix or suffix of not more than two words. The applicant shall have the sole lifetime use of such word(s).
- As a prefix or suffix in naming those horses of which he or she is the foaling breeder. The use of the words "The" or "Young" as prefixes for mares or stallions, or of numeral for stallions, will not be permitted.
- The number of words comprising the name of animal is limited to three, including a prefix or suffix, but excluding numerals for mares.
- After an animal has been registered for entry no change of name will be permitted.

# OMARAMA WAGON TREK

January 2010

Three wagons comprised the travelling party for the "Omarama Trek" with the people ranging from 9 years through to late 70's. The scenery was breathtaking, the comradie was top shelf and every horse pulled their weight. It was great to catch up with Jim Morris and see the inspiring place he calls home. Sunday - Benmore Station, Monday - Ohau Lodge, Tuesday - Ribbonwood Station, Wed - Ben Avon (Jim Morris), Thurs - Dunstan Downs, Fri - Omarama Pub. A big thankyou goes from all of us to Colin Drummond who was our trek organiser.



# THE COOK FAMILY HAVE A DAY TO CELEBRATE!!



For those of us that show Clydesdales there is many a day where things don't go quite as well as you had hoped - and you learn to live with judges who don't always see your horses the way you do. Well, the Cook family at the Canterbury Royal Show 2009 had a day where almost everything went right. Over 100 RAS Champion medals are awarded at the Royal NZ Show each year and they cover a range of affiliated livestock classes, however only one animal can win

the Royal NZ Show Supreme Animal and last year it was awarded to Woodbury Lilly owned by Jim and Deborah Cook from Cust. Woodbury Lilly, a five

year old blue roan coloured mare standing at appr. 17hh is the progeny of Woodbury Ruby and Donnybrook Maynooth. It was truly a day to celebrate the Clydesdale Horse and perhaps also a time to reflect on the foundation stones laid down by Mr Frank Merrin and Frank Merrin Junior (Deborahs grandad) who were great ploughmen of their time. I asked Deborah to put down a few words about their day at The Canterbury Royal Show 2009 and here they are - "It was an absolute honour to win supreme champion clydesdale then to go on to all breeds supreme and then supreme animal of the show.



*The Cook family*

What an awesome day for the clydesdale breed. A real pleasure to have Max Marriot judge us and pass on his knowledge. He thoroughly enjoyed his time here . He was impressed with the turn out and the quality of the clydesdales."

Deborah went on to tell me about some of the older pictures featured here - " Ploughing photos, Frank Merrin snr was my great grandad, Frank Merrin jnr was my grandad, my dad being the youngest of 6 children

meant by the time I was interested in horses F M jnr had gone . F M snr was one of the founding members or the North Canterbury Ploughing Association. F M jnr ploughed from a young age, they farmed at Coutts Island then East Eyreton. Last year Jim and I ploughed at the centenary with Ruby and McQuire. It was humbling to walk in his footsteps 100 years later."



*Woodbury Laura with Lilly in the background - 1st & 2nd in the best presented class*



Just for the record here's the Cook's 2009 Royal results

Best Presented Clydesdale Horse and Handler (16)

- 1) Woodbury Laura
- 2) Woodbury Lilly
- 5) Woodbury Red

Brood Mare, 3 years and over, foal at foot or in foal(3):

- 2) Woodbury Red

Mare not to foal in current show season, 3 years and over. (8):

- 1) Woodbury Lilly
- 2) Woodbury Laura
- 4) Woodbury Ruby

Champion Clydesdale Mare or Filly:

Woodbury Lilly

Challenge Cup - Champion Clydesdale Female.

Supreme Champion Clydesdale: Woodbury Lilly

RAS Award - Gold Medal.

Supreme In-Hand Horse:

Clydesdale - Woodbury Lilly

Best Animal at the Show:

Clydesdale --- Woodbury Lilly

Best Walking Clydesdale (23):

- 2) Woodbury Red
- 5) Woodbury Lilly

Pair Females, any age,

must compete in other Classes. (8):

- 1) Woodbury Lilly & Laura
- 2) Woodbury Red & Ruby

Best Groomed and Decorated Clydesdale, to be shown in harness(12):

- 3) Woodbury Ruby

Sledge Driving Class (12):

- 1) Woodbury Ruby

D.D. McFarlane Perpetual Challenge Shield.

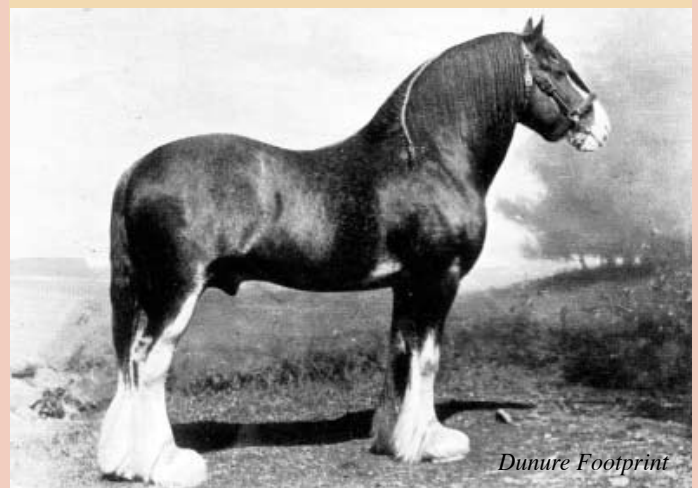
Given by the late Leonard White for the most points in the Clydesdale, Shorthorn & Corriedale Sections in turn.

Awarded for the Clydesdale Section for 2009:

Winners: Jim & Deborah Cook, Cust.

## CLYDESDALE COLOUR

As a breeder of Clydesdales I find it interesting how many Clydesdales are sold based primarily on colour. Remember the age old saying "A good horse is never a bad colour". I know I can sell a black foal far quicker (and for more money) than I can a roan irrespective of quality. In North America especially it is evident that few breeders today, give credence to the old saying. Horses with one, two or more black or grey legs, regardless of their quality, breed character, movement or blood lines, often capture little buyer interest, as do roans although they may be the superior horse. Even action can sometimes be overlooked in favour of a particular colour preference. Mr Bruce A Roy (an American draught horse journalist) was quoted recently as saying - "Roan horses must be employed on occasion if Clydesdale breeders are to maintain quality in the horses they breed. Solid coloured Clydesdales bred to solid coloured Clydesdales, generation after generation, lose quality. The hair on Clydesdales, the product of such a breeding program, is increasingly coarse and curly with each passing generation. The bright body colours sought fade. While few breeders want a stable of roan Clydesdales, it is essential that roan horses be employed to a point in successful Clydesdale breeding programs. Surely, soundness, manner of travelling, breed character, conformation, quality and pedigree of a stallion or potential brood mare are equally key, if the seedstock a draft horseman produces are to achieve lasting success." When I look back through the old stud books it is evident that in New Zealand we have often had our share of roans - even our emblem or logo for the Clydesdale Horse Society of NZ (Inc) features a horse with a lot of white hairs throughout his coat and an off fore leg that is rather "grey". The horse of course is the great Dunure Footprint. Other prominent mares in this part of the world include the roans Orange Blossom, White Heather and of course there have been many others. Perhaps here in NZ we are holding true to the original Clydesdale type as we do not breed primarily to meet the demands of the North American market - where they seem to want a huge bay horse typical of the type "Budweiser" have used in their promotions for many years. I know there are members who hold this view and lets hope they are right. ED



## ***Kelt Capital Horse of the Year Clydesdale Results, 21st - 22nd March 2009***

*Judge: Bill Affleck*

*Junior Judge: Penelope Donaldson*

### **Colt 2 years and under**

- 1) Donnybrook Lochnorrie (P Stroobant)
- 2) Gleneagles VS Sergeant Major (R Walker Brash)
- 3) Taungatara Monarchs Blaze (S Muggeridge)
- 4) Dajata Garfield (J Morris)



*Donnybrook Lochnorrie*

### **Stallion 3 years and over**

- 1) Ashburn Uda Ponitahi (C Ormsby)

### **Dry Mare 3 years and over**

- 1) Taungatara Rochell (S Muggeridge)
- 2) Erewhon Hazel (C Drummond)
- 3) Fellbeck Nicky (F Pilling)
- 4) Fellbeck Bonnie (F Pilling)

### **Gelding**

- 1) Donnybrook Dark (C Drummond)
- 2) Erewhon Luke (C Drummond)
- 3) Taungatara Chiefs Cody (B Donaldson)
- 4) Donnybrook Major (C Drummond)

### **Best Walking Clydesdale**

- 1) Gleneagles Sergeant Major (R Walker Brash)
- 2) Donnybrook Major (C Drummond)
- 3) Erewhon Hazel (C Drummond)
- 4) Erewhon Fergus (J Hawkins)

### **Inhand Clydesdale Horse of the Year Champion - Gleneagles Sergeant Major (R Walker Brash)**

### **Reserve Champion - Erewhon Hazel (C Drummond)**

### **Clydesdale Horse & Handler Invitation**

- 1) H McNicol
- 2) M Findlay
- 3) C Metz
- 4) D Bedford

### **Clydesdale Ridden on Flat**

- 1) Erewhon Fergus (J Hawkins)
- 2) Donnybrook Katrina (R McNicol)
- 3) Donnybrook Dark (C Drummond)
- 4) Erewhon Bert (C Drummond)

### **Clydesdale Ridden Obstacle Course**

- 1) Taungatara Chiefs Cody (M Finlay)
- 2) Erewhon Bert (C Drummond)
- 3) Meersbrook Cascade (L Rennie)
- 4) Erewhon Hazel (C Drummond)

### **Ridden Clydesdale of the Year Champion - Taungatara Chiefs Cody (B Donaldson)**

### **Reserve Champion - Erewhon Fergus (J Hawkins)**



*Taungatara Chiefs Cody with owner, rider and support team*

### **Single horse in Sledge**

- 1) Taungatara Cole (S Muggeridge)
- 2) Taungatara Ben (S Muggeridge)
- 3) Erewhon Hazel (C Drummond)
- 4) Donnybrook Dark (C Drummond)

### **Single in wheeled vehicle**

- 1) Donnybrook Katrina (R McNicol)
- 2) Erewhon Fergus (J Hawkins)
- 3) Taungatara Chiefs Cody (B Donaldson)
- 4) Donnybrook Major (C Drummond)

### **Pair/Team in wheeled vehicle**

- 1) S Muggeridge
- 2) F Pilling
- 3) C Drummond



*Steve Muggeridge's team*

For show results from all around New Zealand go

## *Horse of the Year continued*

### **Log Skidding**

- 1) Taungatara Claude (S Muggeridge)
- 2) Erewhon Bert (C Drummond)
- 3) Taungatara Cole (S Muggeridge)
- 4) Taungatara Chiefs Cody (B Donaldson)

### **Working Clydesdale of the Year Champion -**

**Taungatara Cole (S Muggeridge)**

**Reserve Champion - Taungatara Claude (S Muggeridge)**

### **Supreme Clydesdale of the Year -**

**Erewhon Bert (C Drummond)**



*Bill Affleck with Colin Drummond and Erewhon Bert*

## ***Morrinsville A&P Show***

### ***North Island Championship, 7th March 2009***

***Judge: Helen McKenzie***

#### **Dry Mare 3yrs & Over:**

- 1) Ashburn Craigs Kimberly (V Simmons)
- 2) Fellbeck Bonnie (F Pilling)
- 3) Fellbeck Nickie (F Pilling)

#### **Brood Mare with foal at foot:**

- 1) Maxwellton Belle (G & J Pryce)

#### **Foal:**

- 1) Blackwood Brooke (G & J Pryce)

#### **Filly 2 year old:**

- 1) Sugar Creek Nell (B Signal)

#### **Colt Yearling or 2 Year old:**

- 1) Donnybrook Lochnorrie (P Stroobant)
- 2) Alpine View Thomas (G & J Pryce)

#### **Stallion 3yrs & Over:**

- 1) D T Oliver (D Thornton)

#### **Champion Mare & Supreme Champion:**

**Ashburn Craigs Kimberly (V Simmons)**

**Reserve Champion Mare: Fellbeck Bonnie (F Pilling)**

**Champion Entire: D T Oliver (D Thornton)**

**Reserve Champion Entire: Donnybrook Lochnorrie**

**(P Stroobant)**



*Derrick Thornton and DT Oliver*



*Ashburn Craigs Kimberly*

#### **Gelding in Hand any age:**

- 1) Fellbeck Clyde (F Pilling)
- 2) Taungatara Chief's Cody (B Donaldson)
- 3) Llewellyn Howard (D Thornton)

#### **Best Footed Clydesdale:**

- 1) Sugar Creek Isabel (B Signal)
- 2) DT Oliver (D Thornton)
- 3) Taungatara Chief's Cody (B Donaldson)

#### **Best Colt or Filly Bred by exhibitor:**

Sugar Creek Nell (B Signal)

#### **Mare or gelding most suitable for 30cwt dray:**

- 1) Fellbeck Clyde (F Pilling)
- 2) Taungatara Chief's Cody (B Donaldson)
- 3) Llewellyn Howard (D Thornton)

#### **Ridden Clydesdale:**

- 1) Taungatara Chief's Cody (B Donaldson)
- 2) Maxwellton Belle (G & J Pryce)

#### **Single Clydesdale horse to be driven in sledge:**

- 1) DT Oliver (D Thornton)
- 2) Fellbeck Bonnie (F Pilling)
- 3) Fellbeck Nickie (F Pilling)

#### **Single Clydesdale Horse in Wheeled Vehicle:**

- 1) Taungatara Chief's Cody (B Donaldson - Gig)
- 2) Maxwellton Belle (G & J Pryce - Cream Wagon)

#### **Pair of Clydesdale horses to be driven in sledge:**

- 1) Llewellyn Howard & D T Oliver (D Thornton)
- 2) Fellbeck Bonnie & Fellbeck Nickie (F Pilling)

#### **Pair of Clydesdale horses in wheeled vehicle:**

- 1) Llewellyn Howard & D T Oliver (D Thornton)
- 2) Fellbeck Bonnie & Fellbeck Nickie (F Pilling)

**ROYAL NEW ZEALAND SHOW**  
CANTERBURY 11TH - 13TH NOVEMBER 2009

Judge: Mr Max Marriott, Victoria, Australia  
Wednesday 11th November

**Best Presented Clydesdale Horse and Handler (16)**

- 1) Woodbury Laura (J & D Cook (Handler, Emma Kent)
- 2) Woodbury Lilly (J & D Cook (Handler, Jim Cook)
- 3) Glen Lie Millie (J Hawkins)
- 4) Sarjon Park David  
(Two Rivers Clydesdale Stud (Handler, P Turton)
- 5) Woodbury Red, (J & D Cook (Handler, D Price)
- 6) Donnybrook Amber (M J Musson (Handler, C Hedley)

**Entire Horse, 3 years and over (4)**

- 1) Sarjon Park David (Two Rivers Clydesdale Stud)
- 2) Donnybrook Seamus 5233 (S Amberger)

**Colt, 2 year old (2)**

- 1) Langnevin Sam (M Lang)

**Colt, Yearling (2)**

- 1) Mossdale Douglas (W L Affleck)
- 2) Goldenlane Nugget (A Vliet Vieland)



*Sarjon Park David*

**Champion Clydesdale Mare or Filly:**

Woodbury Lilly (J & D Cook)  
Challenge Cup - Champion Clydesdale Female.

**Reserve Champion Clydesdale Mare or Filly:**

Donnybrook Angelena (F J O'Connor)

**Supreme Champion Clydesdale:**

Woodbury Lilly (J & D Cook) RAS Award - Gold Medal.

**Supreme In-Hand Horse:** --- Clydesdale --- Woodbury Lilly

**Best Animal at the Show:** --- Clydesdale --- Woodbury Lilly



*Woodbury Lilly*

**Best Yearling or 2 year old Colt or Filly, bred by exhibitor. (12):**

- 1) Donnybrook Angelena (F J O'Connor)
  - 2) Donnybrook Susannah (F J O'Connor)
  - 3) Erewhon Suzy (C Drummond)
  - 4) Dayboo Anja (J Booth)
  - 5) Mossdale Douglas (W L Affleck)
  - 6) Goldenlane Nugget (A Vliet Vieland)
- John McEwing Trophy - best 2 year old and under:  
Donnybrook Angelena (F J O'Connor)



*Donnybrook Angelena*

**Gelding, any age. (6):**

- 1) Donnybrook Dark (C Drummond)
- 2) Langnevin Sky (M Lang)
- 3) Donnybrook Luke (C Drummond)
- 4) Erewhon Fergus (J Hawkins)
- 5) Erewhon Bert (C Drummond)
- 6) Donnybrook Major (C Drummond)

**Best Walking Clydesdale (23):**

- 1) Glen Lie Millie (J Hawkins)
- 2) Woodbury Red (J & D Cook)
- 3) Erewhon Maggie (& foal) (C Drummond)
- 4) Donnybrook Angelena (F.J. O'Connor)
- 5) Woodbury Lilly (J & D Cook)
- 6) MillCreek Meg (A Vliet Vieland)

**Champion Entire Clydesdale:**

Sarjon Park David (Two Rivers Clydesdale Stud)  
RAS Trophy (Wright Stevenson Challenge Cup- Champion Clydesdale Stallion)  
McIntosh Family Medal - Champion Clydesdale Stallion

**Reserve Champion Entire Clydesdale:**

Donnybrook Seamus 5233 (S Amberger)

**Brood Mare, 3 years and over, foal at foot or in (3):**

- 1) Erewhon Maggie (& foal) (C Drummond)
- 2) Woodbury Red (J & D Cook)
- 3) Donnybrook Amber (& foal) (M J Musson)

**Mare not to foal in current show season, 3 years and over. (8):**

- 1) Woodbury Lilly (J & D Cook)
- 2) Woodbury Laura (J & D Cook)
- 3) Glen Lie Millie (J Hawkins)
- 4) Woodbury Ruby (J & D Cook)
- 5) Millcreek Meg (A Vliet Vieland)
- 6) Mossdale Margaret (W L Affleck)

**Filly, 2 year old. (3):**

- 1) Donnybrook Angelena (F J O'Connor)
- 2) Dayboo Anja (J Booth)

**Filly, Yearling. (5):**

- 1) Donnybrook Susannah (F J O'Connor)
- 2) Erewhon Suzy (C Drummond)
- 3) Dayboo Ella (J Booth)
- 4) Dayboo Amy (J Booth)

**Pair Females, any age, must compete in other Classes. (8):**

- 1) Woodbury Lilly & Laura (J & D Cook)
- 2) Woodbury Red & Ruby (J & D Cook)
- 3) Donnybrook Angelena & Susannah (F J O'Connor)
- 4) Erewhon Suzy and Maggie (C Drummond)
- 5) Donnybrook Amber & Glen Lie Millie (M J Musson & J Hawkins)
- 6) Dayboo Ella & Anja (J Booth)

Thursday 12th November

**Best Groomed and Decorated Clydesdale, to be shown in harness. (12):**

- 1) Ashstencroft Rose (J Booth)
- 2) Ashstencroft Donella (J Booth)
- 3) Woodbury Ruby (J & D Cook)
- 4) Erewhon Fergus (J Hawkins)
- 5) Donnybrook Dark (C Drummond)
- 6) Donnybrook Connor (C Drummond)

**Sledge Driving Class (12):**

- 1) Woodbury Ruby (J & D Cook)
- 2) Ashstencroft Donella (J Booth, Driver: Jo Heron)
- 3) Donnybrook Dark (C Drummond)
- 4) Donnybrook Major (C Drummond)
- 5) Erewhon Fergus (J Hawkins)



*Woodbury Ruby*

**Ridden Clydesdale. (9):**

- 1) Erewhon Fergus (J Hawkins)
- 2) Donnybrook Dark (C Drummond, Rider: Andrea Smith)
- 3) Erewhon Bert (C Drummond, Rider: Emily Stroobant)
- 4) Ashstencroft Rose (J Booth, Rider: Jo Heron)
- 5) Donnybrook Major (C Drummond, Rider: Wendy Britten)
- 6) Ashstencroft Donella (J Booth, Rider: Gaye Day)



*Emily Stroobant riding Erewhon Bert*

**Single, any age, to be shown in harness attached to a vehicle. (6):**

- 1) Erewhon Fergus (J Hawkins)
- 2) Donnybrook Luke (C Drummond)
- 3) Ashstencroft Rose (J Booth)
- 4) Ashstencroft Donella (J Booth, Driver: J Heron)
- 5) Atohua Warrior (C Drummond)

**Pair or Multiple, any age, to be shown in harness attached to a vehicle. (5):**

- 1) Donnybrook Luke, Erewhon Bert & Connor (bay team) (C Drummond)
- 2) Donnybrook Dark, Major & Warrior (black team) (C Drummond, Driver: P Amberger)
- 3) Erewhon Fergus & Glen Lie Millie (J Hawkins)
- 4) Glen Viking & Gemini Lucky (A Vliet Vielan)

**D.D. McFarlane Perpetual Challenge Shield.**

**Given by the late Leonard White for the most points in the Clydesdale, Shorthorn & Corriedale Sections in turn.**

**Awarded for the Clydesdale Section for 2009: Winners: Jim & Deborah Cook, Cust.**



*Phil Amberger with Colin Drummond's black team*



*Deborah Cook and Paul Power*

For show results from all around New Zealand go to our website - [www.clydesdale.org.nz](http://www.clydesdale.org.nz)

# THIS SEASONS FOALS - WHERE WOULD



*Glen Lie Rebecca*



*Kia Kaha Maclary*



*An Erewhon foal as yet unnamed*



*First foal for Ashburn Craigs Kate*



*Thornton's mare Lily with foal - Jess*



*Woodbury Ruby and foal - Woodbury Scarlett*



*Wee Boris with a future handler*



*Nukuhau Hazel*

# WE BE WITHOUT THEM !



*Kia Kaha Kestrel and Kia Kaha Crumpet*



*Drummer - perhaps about to turn black?*



*Erin Cassie with the vet and Ashburn Kallista and foal*



*Amuri Waiariki Ginger (Ginny)*



*The Donovan's latest foal out of Bonnie*



*Aveael Webb with Fairdale Lady MacPherson and dam*



*Kia Kaha Boxer*



*Marshall Millar of Wairarapa  
competing at the World Cup of  
Heavy Horse Shoeing at Horse  
EXPO - Helensville 2009  
Photo supplied by Kathryn Long*